



**Sydney
Contemporary**
08-11.09.2022
Carriageworks

Bettina Willner, Evi O, Indivi Sutton & Katie Daniels @ Sydney Contemporary

Booth D04 8 - 11 September 2022



Indivi Sutton

Indivi Sutton (b.2000, New York, USA) lives in Sydney. Currently studying Art History and French at Sydney University, Indivi holds a minor in Visual Art from Sydney College of the Arts. Beginning her education at the Rudolf Steiner School in New York City where she was introduced an enchantment to colour and has been the foundation of a deep desire to explore its interpretation and evocativeness in her painting.

Indivi studied with Paton Miller, an American contemporary painter and studied colour theory and painting at Rhode Island School of Design. The tenor of Indivi's work explores the nuance of emotional interdependence, the relationship between painting and memory.

In this series, Indivi draws on Rudolf Steiner's viewpoint on Goethe's Scientific Writings on nature. Delving into the ideology of Goethe, where he writes of a more compassionate and intimate connection to nature. She explores the interpenetration of our consciousness and the world around us.





But As Though To Time Alone, 2022

Pigment powder on raw linen, Museo aluminium support

200 x 264 cm

\$16,000



Being One or Two I, 2022
Pigment powder on raw linen
200 x 160 cm
\$12,000



Being One or Two II, 2022
Pigment powder on raw linen
200 x 160 cm
\$12,000

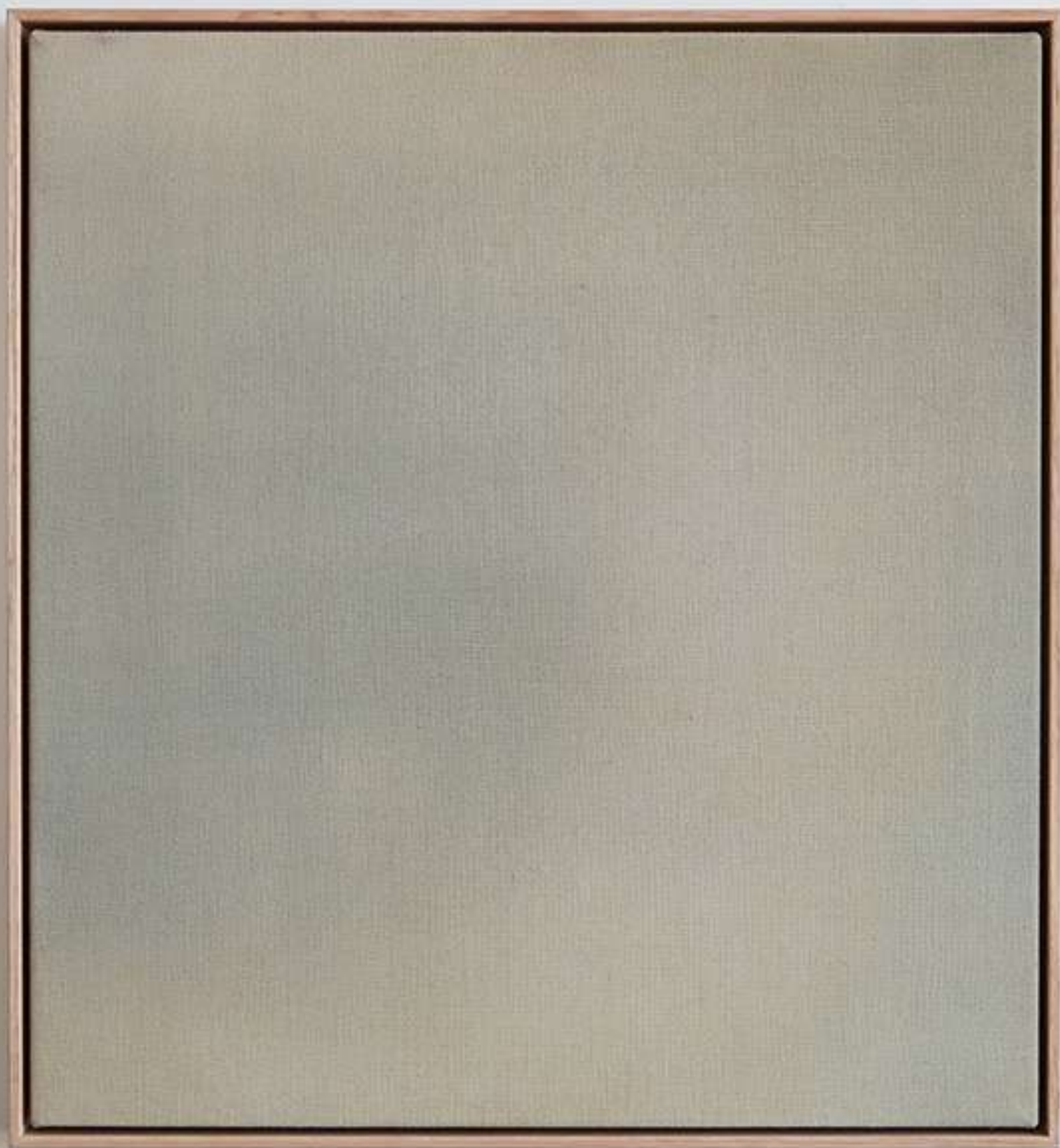


Composition Where Everything Lost Is Found, 2022

Pigment powder on raw linen, Tasmanian oak frame

69.5 x 64.5 cm

\$1,900



Suddenly Embraced by the Invisible I, 2022

Pigment powder on raw linen, Tasmanian oak frame

69.5 x 64.5 cm

\$1,900

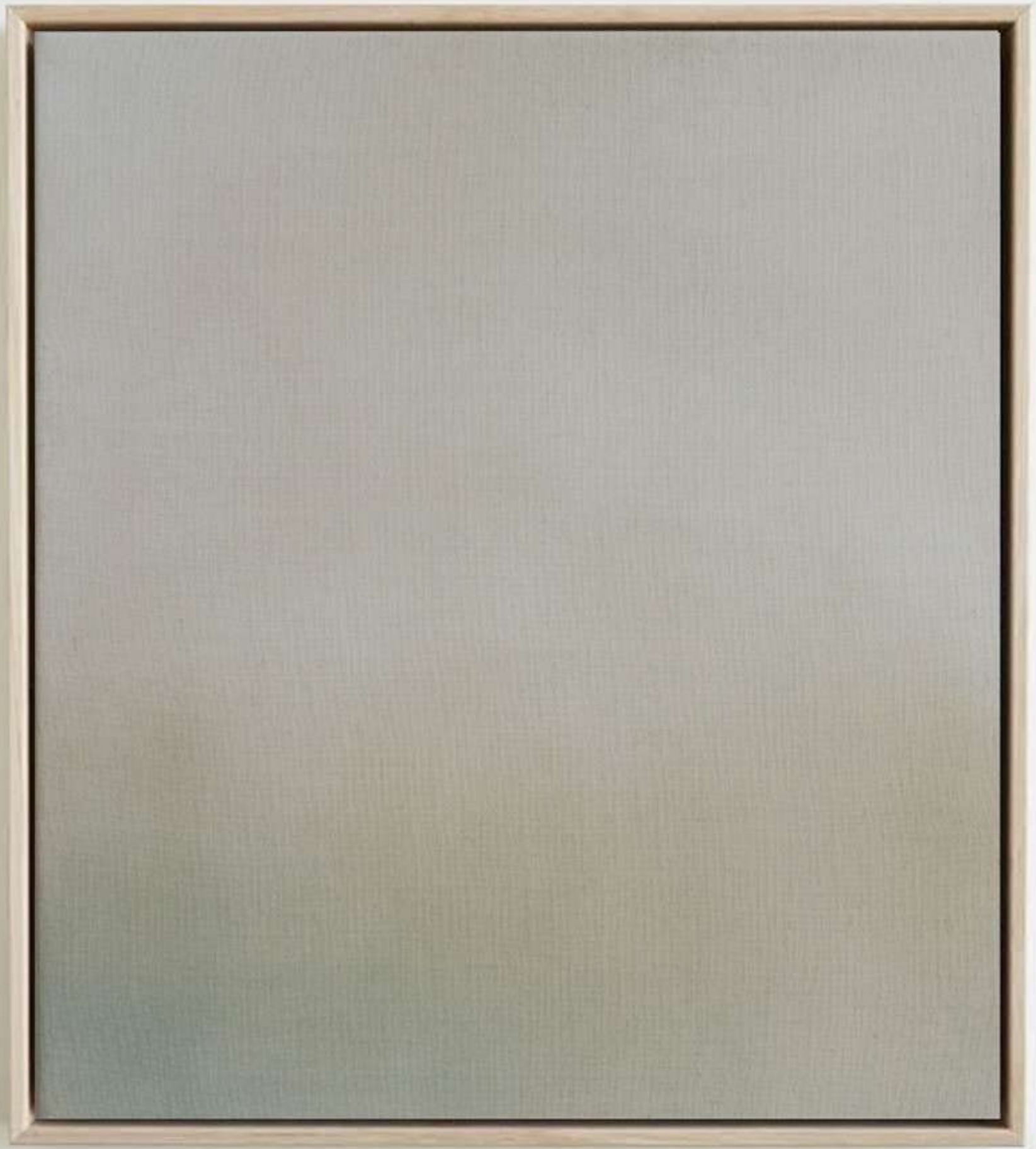


Essence of the Vanishing, 2022

Pigment powder on raw linen, Tasmanian oak frame

69.5 x 64.5 cm

\$1,900

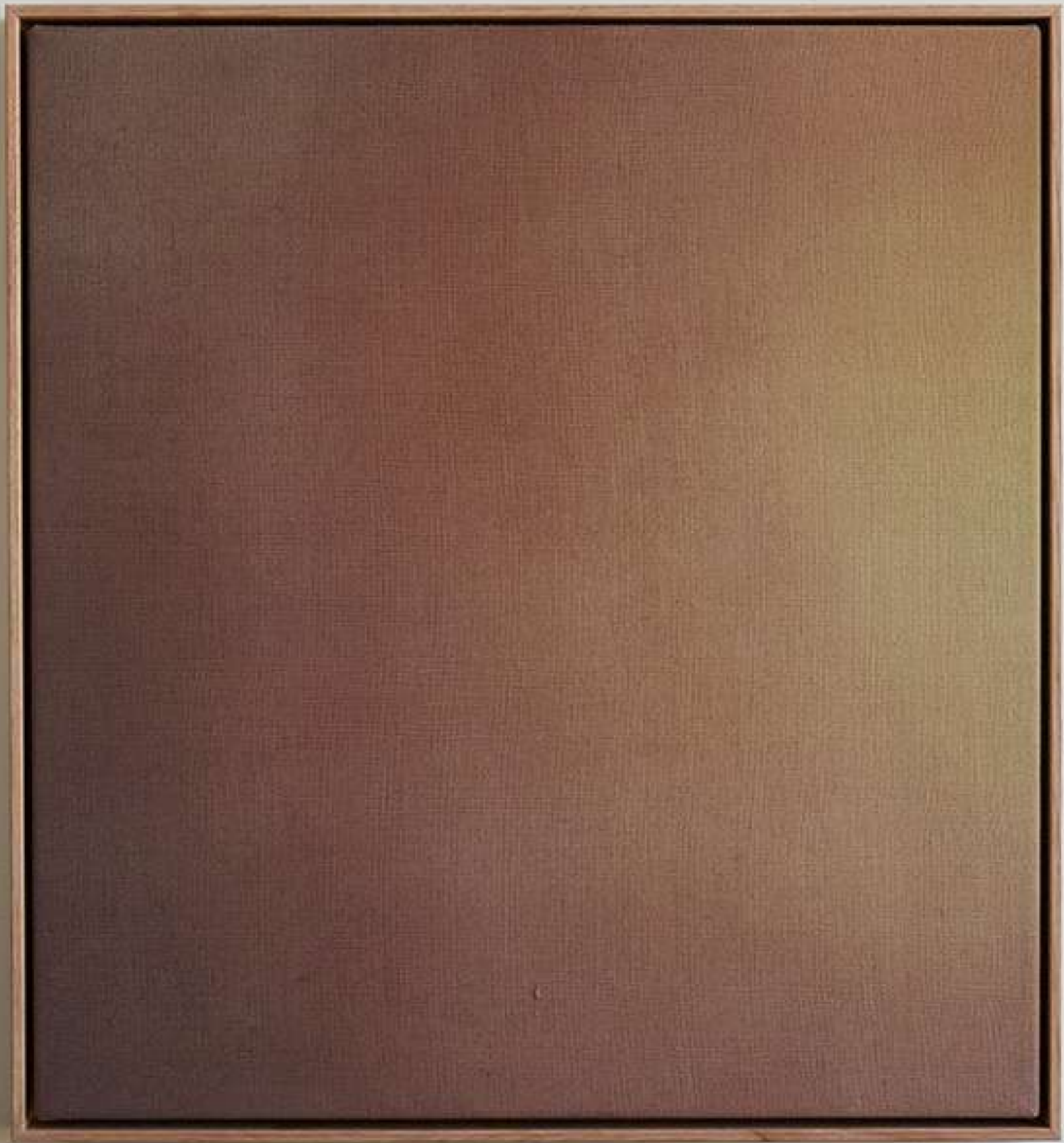


Suddenly Embraced by the Invisible II, 2022

Pigment powder on raw linen, Tasmanian oak frame

69.5 x 64.5 cm

\$1,900



Still At Once, 2022

Pigment powder on raw linen, Tasmanian oak frame

69.5 x 64.5 cm

\$1,900



To the Place of Tears, 2022

Pigment powder on raw linen, Tasmanian oak frame

59 x 54 cm

\$1,400

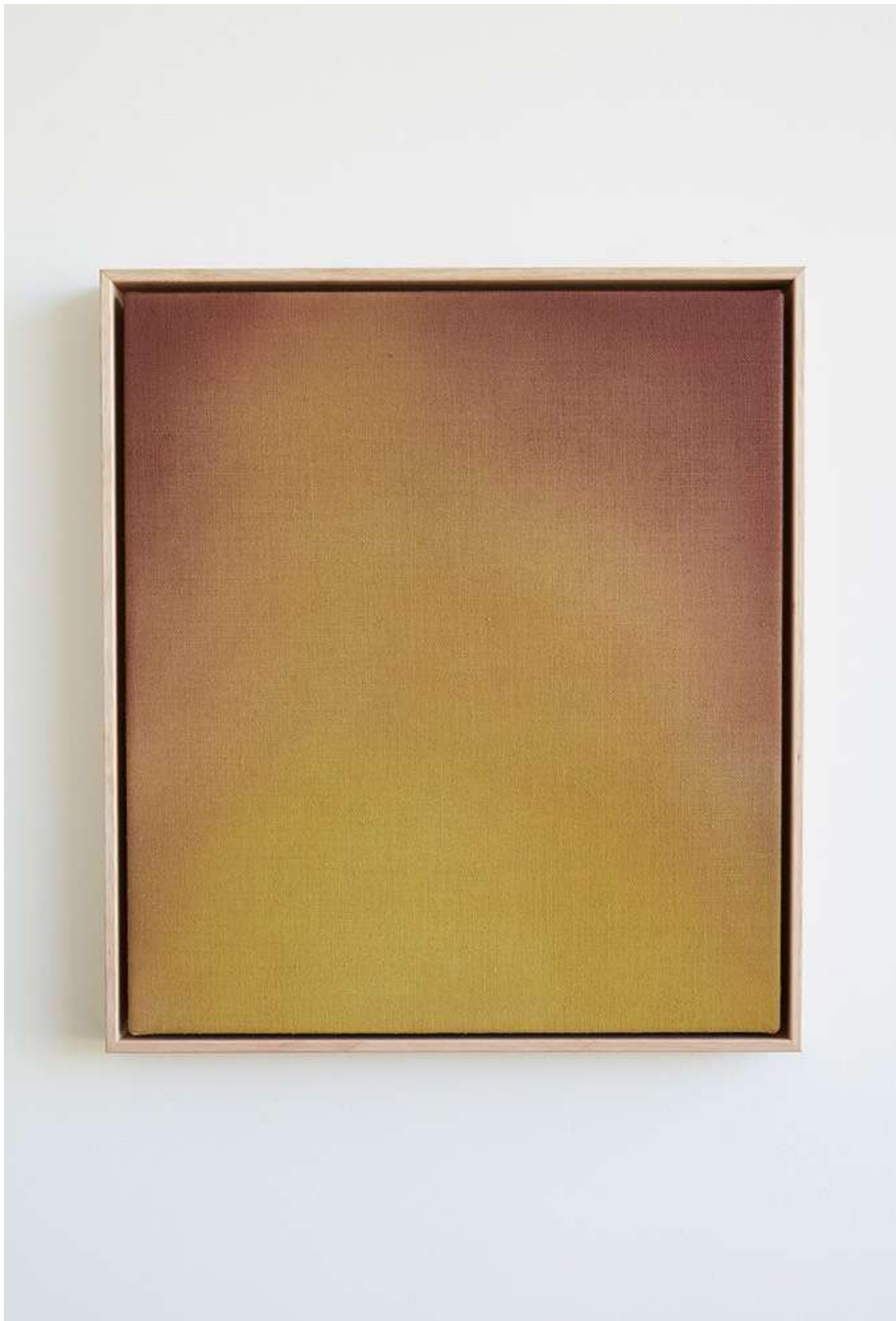


Unfolding Into Being, 2022

Pigment powder on raw linen, Tasmanian oak frame

49 x 44 cm

\$1,100



What Senses Took In, 2022

Pigment powder on raw linen, Tasmanian oak frame

49 x 44 cm

\$1,100



And Then There Is, 2022

Pigment powder on raw linen, Tasmanian oak frame

49 x 44 cm

\$1,100



SAINT CLOCHE

37 MACDONALD STREET PADDINGTON NSW

SAINTCLOCHE.COM